

meccalte



HCP34

MECCALTE spa - Via Roma, 20 - 36051 CREAZZO (VI) ITALIA
Tel. +39 0444/396111 - Fax +39 0444/396166 - e-mail : info@meccalte.it
web site: www.meccalte.com

20 POLE **A**

400 Hz 2400 r.p.m.

CHARACTERISTICS

ambient 40° C

Type	KVA - cos φ 0.8 - 3 Phase continuous			Efficiency		
	CL. H (ΔT= 125°C)		CL. F (ΔT= 105°C)	η % CL. H (ΔT= 125°C)		
400 Hz						
Series Star Λ	415	IP45	415	2/4	3/4	4/4
Parallel Star $\Lambda\Lambda$	208		208			
Series Delta Δ	240		240			
Parallel Delta $\Delta\Delta$	120		120			
HCP34-1S/20	75	58	70	90,2	91,9	91,5
HCP34-2S/20	95	75	85	90,5	92,2	91,8
HCP34-3S/20	125	95	115	90,8	92,4	92
HCP34-1L/20	150	115	135	91,3	92,9	92,5

Type	J (Kgm ²) B3-B14 FORM	Weight MD35 (Kg)	Air Volume 2400 rpm (m ³ /min)	Noise dB(A)	
				2400 rpm	
				1m	7m
HCP34-1S/20	1,2709	310	28	88	74
HCP34-2S/20	1,5800	345			
HCP34-3S/20	1,9472	380			
HCP34-1L/20	2,2263	430			

ACCESSORIES

REGULATOR		PARALLEL DEVICE	THERMAL PROTECTION			HEATERS	MECHANICAL PROTECTION		
UVR6/1-H400B	SR7/H400B		PTC	BIMET DEVICE	PT100		IP23	IP45	IP55
<input checked="" type="checkbox"/>	<input type="checkbox"/>	<input type="checkbox"/>	<input type="checkbox"/>	<input type="checkbox"/>	<input type="checkbox"/>	<input type="checkbox"/>	<input checked="" type="checkbox"/>	<input type="checkbox"/>	<input type="checkbox"/>

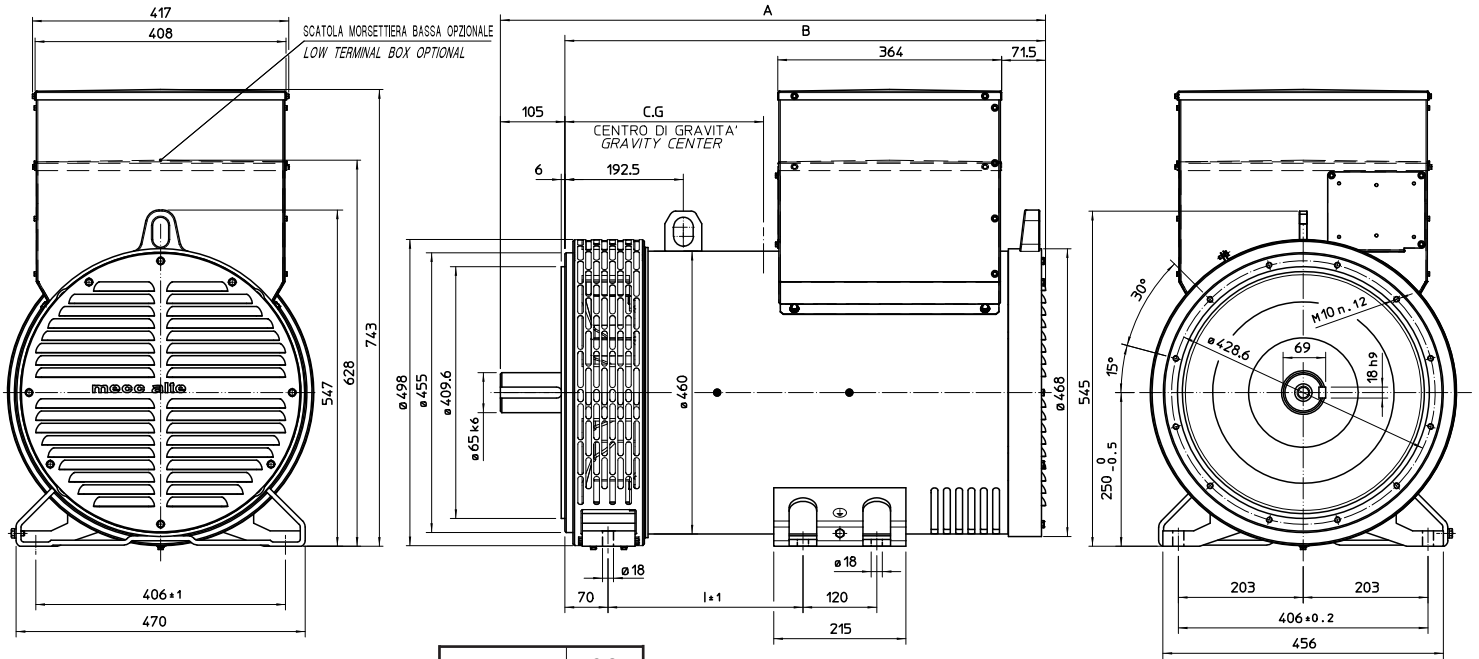
● = Standard □ = Optional

Rating



OVERALL DIMENSIONS B3 - B14 FORM

dimensions in mm

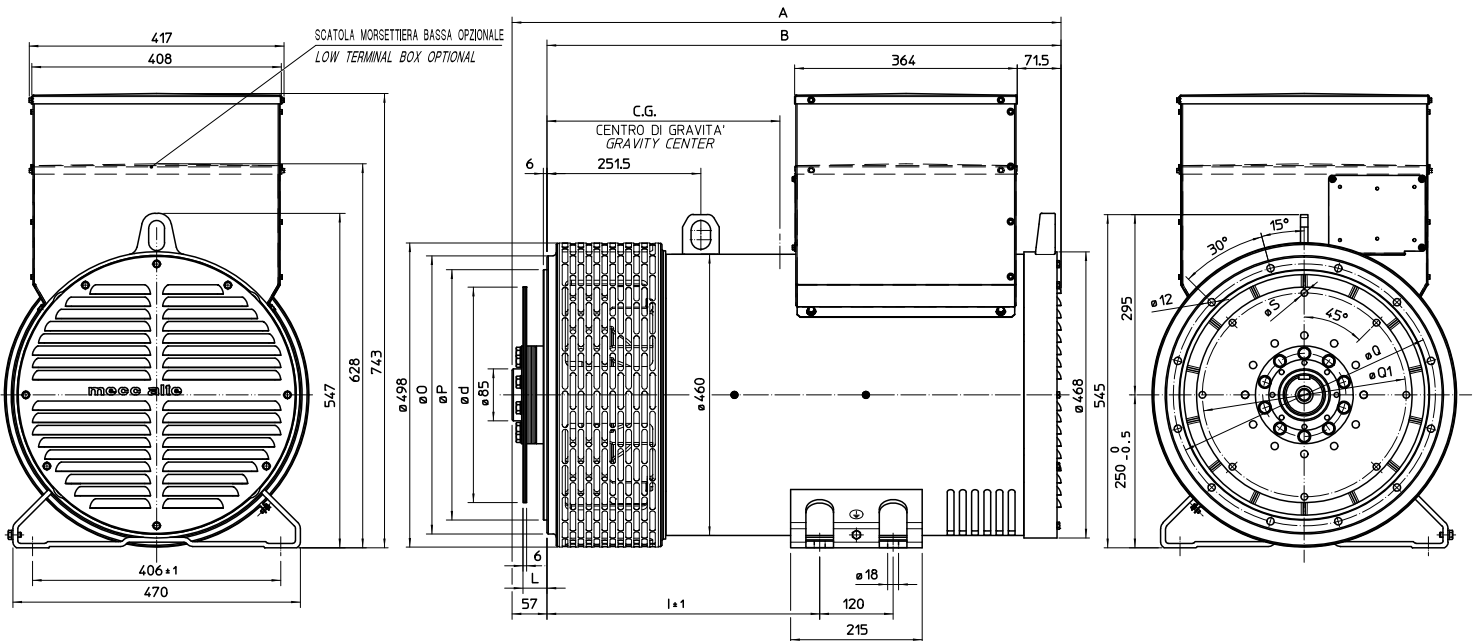


TYPE	C.G.
HCP34- 1S/20	309
HCP34- 2S/20	334
HCP34- 3S/20	357
HCP34- 1L/20	377

TYPE	A	B	I
HCP 34 S	806,5	701,5	227
HCP 34 L	886,5	781,5	317

OVERALL DIMENSIONS MD35 FORM

dimensions in mm



SAE N.	DISC COUPLING			
	L	d	Q1	S
10	53,8	314,32	295,27	11
11 1/2	39,6	352,42	333,37	11
14	25,4	466,72	438,15	14

SAE N.	FLANGE		
	O	P	Q
3	451	409,6	428,6
2	489	447,7	466,7
1	552	511,2	530,2

TYPE	C.G.
HCP34-1S/20	379
HCP34-2S/20	387
HCP34-3S/20	397
HCP34-2L/20	431

TYPE	A	B	I
HCP 34 - S	817,5	760,5	356
HCP 34 - L	897,5	840,5	446